



DEPARTMENT OF COMMUNITY DEVELOPMENT

Jaclynn Workman- Administrator

HELPFUL BUILDING GUIDELINES

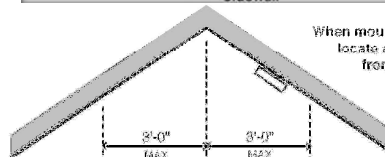
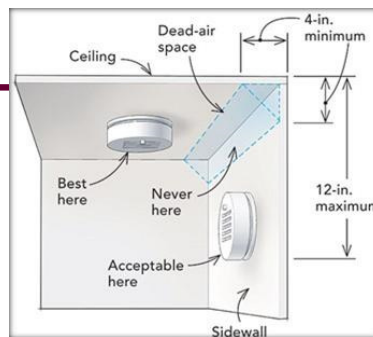
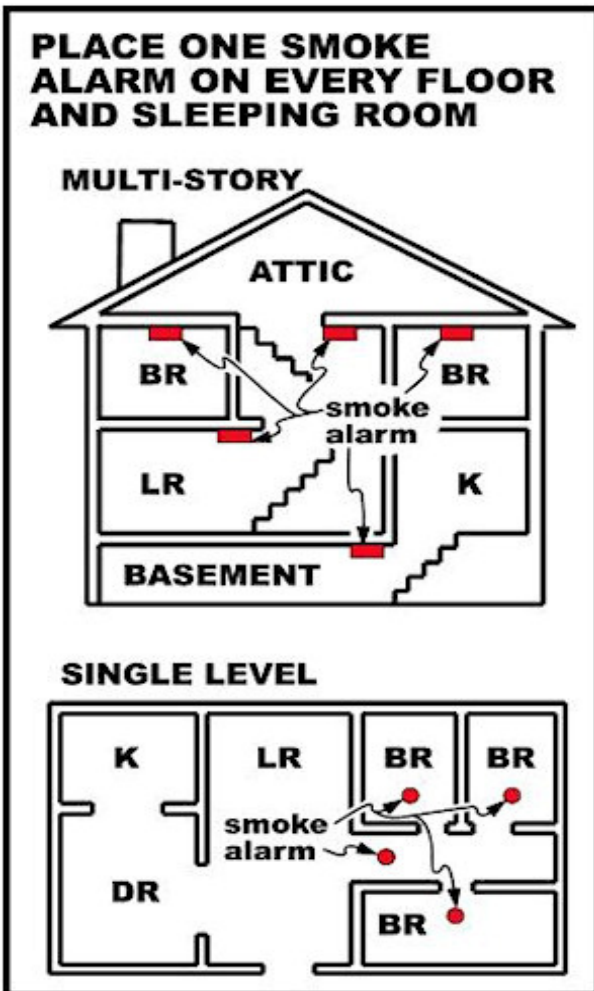
SMOKE ALARMS - R314

R314.1 General. Smoke alarms shall comply with NFPA 72 and section R314.

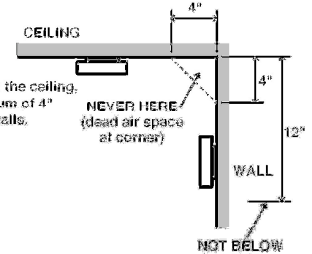
Smoke alarms shall be listed in accordance with UL217 and Combination alarms in accordance with UL217 and UL2034.

Required Location:

1. In each sleeping room.
2. Outside each separate sleeping area in the immediate vicinity of the bedrooms.
3. On each additional story of the dwelling, including basements and habitable attics and not including crawl spaces and uninhabitable attics. In dwellings or dwelling units with split levels and without an intervening door between the adjacent levels, a smoke alarm installed on the upper level shall suffice for the adjacent lower level provided that the lower level is less than one full story below the upper level.
4. Smoke alarms shall be installed not less than 3 feet horizontally from the door or the opening of a bathroom that contains a bathtub or shower unless this would prevent placement of a smoke alarm required by this section.



Smoke alarms on a sloped, peaked, or cathedral ceiling should be placed within 3-feet (measured horizontally) of the highest point in the ceiling.



When mounting on the ceiling, locate a minimum of 4" from side walls.

When mounting on a wall, use an inside wall, with the top edge of the alarm at minimum of 4" and a maximum of 12" from the ceiling.

Avoid the following locations:

1. Within 20' of combustible sources such as; fireplaces, furnaces, hot water heaters, space heaters, kitchens, garages with vehicle exhaust, etc.,
2. Not within 10' of damp location such as bathrooms with showers.
3. Not in unconditioned areas.
4. Not in commonly dirty or dusty areas where vents of alarms could become clogged.
5. Minimum of 5' from fluorescent lighting.
6. Near fresh air vents or drafty areas such as air or heat vents, ceiling fans, etc.

DISCLAIMER: This handout has been created by Tazewell County Community Development to assist with code compliance under the 2018 International Residential Code and is not intended to cover all circumstances. For further questions please check with the Department.

SMOKE ALARMS

R314.4 Interconnection. Where more than one smoke alarm is required to be installed within an individual dwelling unit in accordance with R314.3, the alarm devices shall be interconnected in such a manner that the actuation of one alarm will activate all of the alarms in the individual dwelling unit. Physical interconnection of smoke alarms shall not be required where listed wireless alarms are installed and all alarms sound upon activation of one alarm.

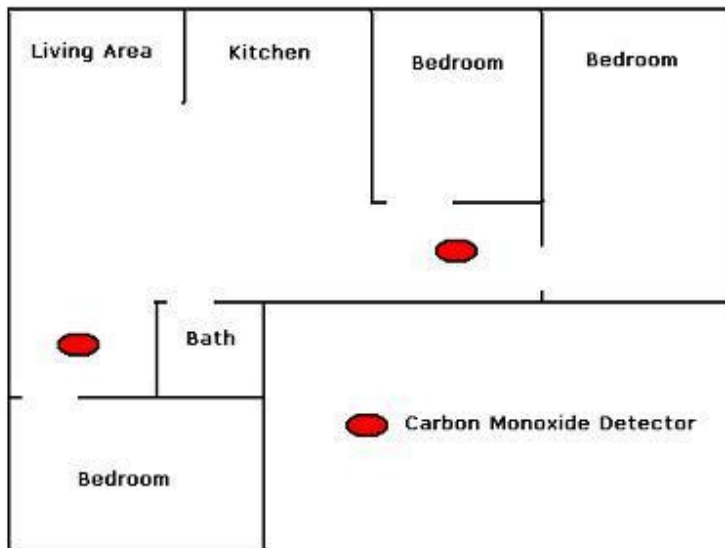
R314.6 Power Source. Smoke alarms shall receive their primary power from the building wiring where such wiring is served from a commercial source and, where primary power is interrupted, shall receive power from a battery. Wiring shall be permanent and without a disconnecting switch other than those required for overcurrent protection.

Exceptions:

1. Smoke alarms may be battery operated when placed in buildings without commercial power.

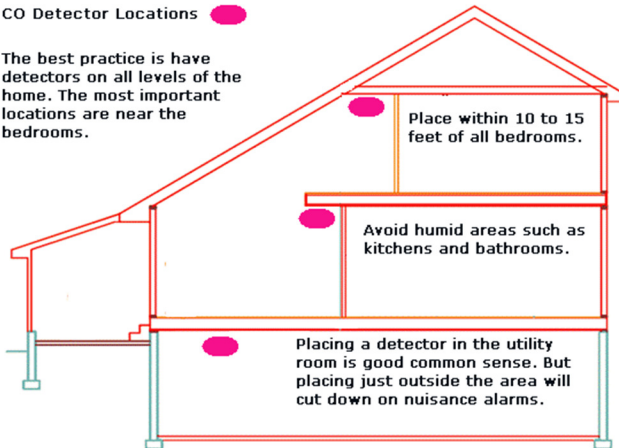
Carbon Monoxide Alarms - R315

Carbon Monoxide Detector Placement



CO Detector Locations

The best practice is have detectors on all levels of the home. The most important locations are near the bedrooms.



R315.3 Location. Carbon monoxide alarms in dwelling units shall be installed outside of each separate sleeping area in the immediate vicinity of the bedrooms. Where a fuel-burning appliance is located within a bedroom or its attached bathroom, a carbon monoxide alarm shall be installed within the bedroom.

R315.5 Interconnectivity. Where more than one carbon monoxide alarm is required to be installed within an individual dwelling unit in accordance with Section R315.3, the alarm devices shall be interconnected in such a manner that the actuation of one alarm will activate all of the alarms in the individual dwelling unit. Physical interconnection of carbon monoxide alarms shall not be required where listed wireless alarms are installed and all alarms sound upon activation of one alarm.

Exception: Interconnection of carbon monoxide alarms in existing areas shall not be required where alteration or repairs do not result in the removal of interior wall or ceiling finishes exposing the structure, unless there is an attic, crawl space or basement available that could provide access for interconnection without the removal of interior finishes.